

cecotec



**SPLIT, MULTISPLIT AND CASSETTE
AIR CONDITIONERS**

2024

Your ecofriendly home at the perfect temperature.



Cecotec air conditioners cool and heat your home while respecting the environment thanks to its R32 gas. Discover our range and choose from a wide variety of Split, Multisplit and Cassette air conditioners and enjoy a complete and instant coolness in summer and a warm and cozy atmosphere in winter. Choosing the model will be the only difficult part

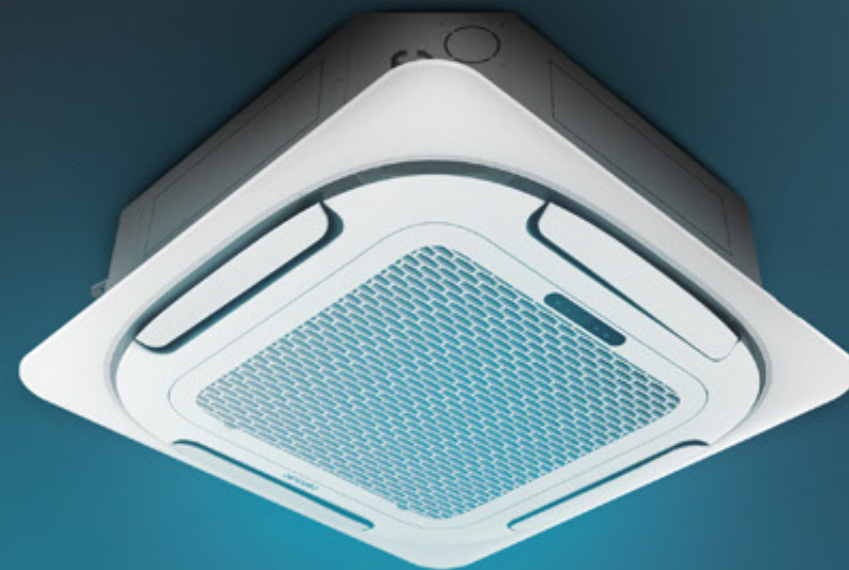
Index

Your ecofriendly home	2
at the perfect temperature.	2
Heat pump	6
Up to 45 m²	6
Noiseless	6
Inverter motor	8
A + / A ++ class	9
R32 gas	9
5 modes	10
Eco mode and night mode	10
Up to 8 speeds	10
Wi-Fi	12
LED display	12
Remote control	13
Splits	14
AirClima 9000 Smartfresh Split air conditioner	16
AirClima 12000 Smartfresh Split air conditioner	17
EnergySilence 12000 AirClima split air conditioner	18
AirClima 12000 Smartfresh Connected Split air conditioner	19
AirClima 18000 Smartfresh Split air conditioner	20
AirClima 24000 Smartfresh Split air conditioner	21
Split air conditioners comparative table	22
Multisplit	24
AirClima 18000 Multi Connected	26
AirClima 27000 Multi Connected	27
Multisplit comparative table	28
Cassettes	30
AirClima 12000 Cassette Connected	32
AirClima 18000 Cassette Connected	33
AirClima 24000 Cassette Connected	34
Cassette air conditioners comparative table	35

Coolness and heating within your reach

Split air conditioners

Cool any room in the most comfortable and quickest way with a single indoor unit.

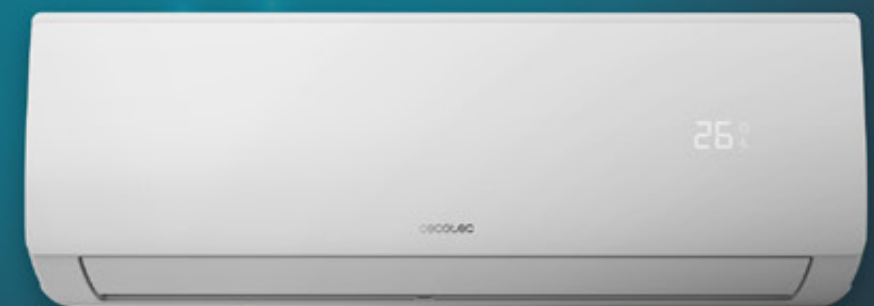


Cassette air conditioners

Maximize your space with our Cassette air conditioners and quietly cool larger spaces such as offices.

Multisplit air conditioners

Want to refresh more than one room? Choose our Multisplit air conditioners with up to 3 indoor units and a single outdoor unit to cool your home completely.



HEAT PUMP

Warm in winter, cool in summer.

Cool off in summer, warm up in winter. Thanks to its heat pump, you can adjust the temperature of your air conditioner according to the time of the year.

UP TO 45 M²

Large coverage area.

With a single air-conditioning unit and an air flow rate of up to 1500 m³/h¹, you can heat or cool rooms up to 45 m²² without surprises on your electricity bill.

NOISELESS

Undisturbed atmosphere.

With the silent operation of our air conditioner, enjoy different temperatures to your liking without noise or discomfort.



INVERTER MOTOR

Maximum efficiency.

The Inverter motor offers maximum air conditioning efficiency as it auto-regulates speed according to the selected settings.

A⁺⁺



A⁺

A + / A ++ CLASS

Energy class.

Our air conditioners have an energy rating that will not leave you indifferent. With a class A ++ for ventilation and A + for heating¹, you can enjoy reduced consumption by heating or cooling the rooms to your liking.

R32 GAS

Protect the environment.

Our air conditioners use R32 gas which, compared to R410A gas, is more energy efficient and less polluting, helping you to take care of the environment.

5 MODES

Each mode, different operation.

Choose from 5 modes of custom air conditioning operation: automatic, cooling, ventilation, heating or dehumidification mode.



ECO MODE AND NIGHT MODE

Wide range of modes.

Select the night mode during your sleeping hours and, for maximum savings, switch to eco mode with just one click.



UP TO 8 SPEEDS

Speed at your own pace.

Our air conditioners have up to 8 speeds that give you comfort and versatility so that you can control the unit to your liking and choose the air flow power that best suits you at all times.



WI-FI

Take control from your smartphone.

Set the air conditioning with your smartphone wherever you are. Connect it to your smartphone and programme or change the temperature even from outside the house thanks to its Wi-Fi function¹.

LED DISPLAY

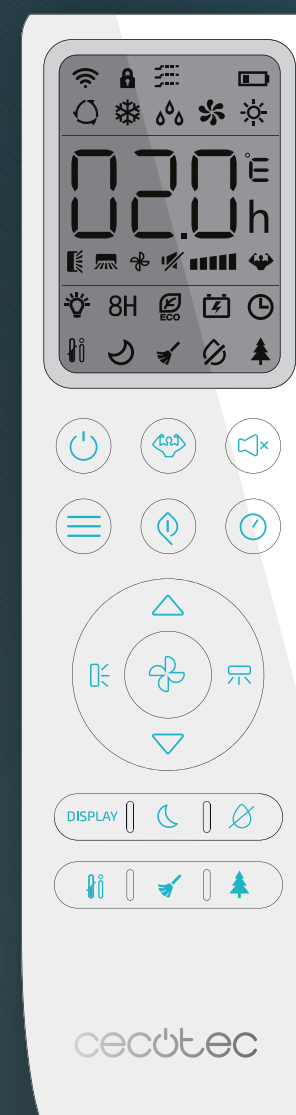
Everything under control at a glance

Check the settings of your air conditioner through its LED display and enjoy total control at all times.

REMOTE CONTROL

Wherever you want, however you want.

Turn on, regulate the temperature or turn off the air conditioner comfortably from anywhere thanks to the remote control.



- Switch on/off device
- Turbo Function
- Silence Function
- Mode selection
- ECO function on/off
- Set timer
- Increase temperature/time
- Decrease temperature/time
- Blade oscillation (up/down)
- Blade oscillation (left/right)
- Fan speed
- DISPLAY Display power button
- Sleep Function
- Anti-mould Function
- I Feel Function
- Auto-Cleaning Function
- Health Function

Splits



UP TO 6000 FRIGORIES

BTU

BTU UP TO 24000



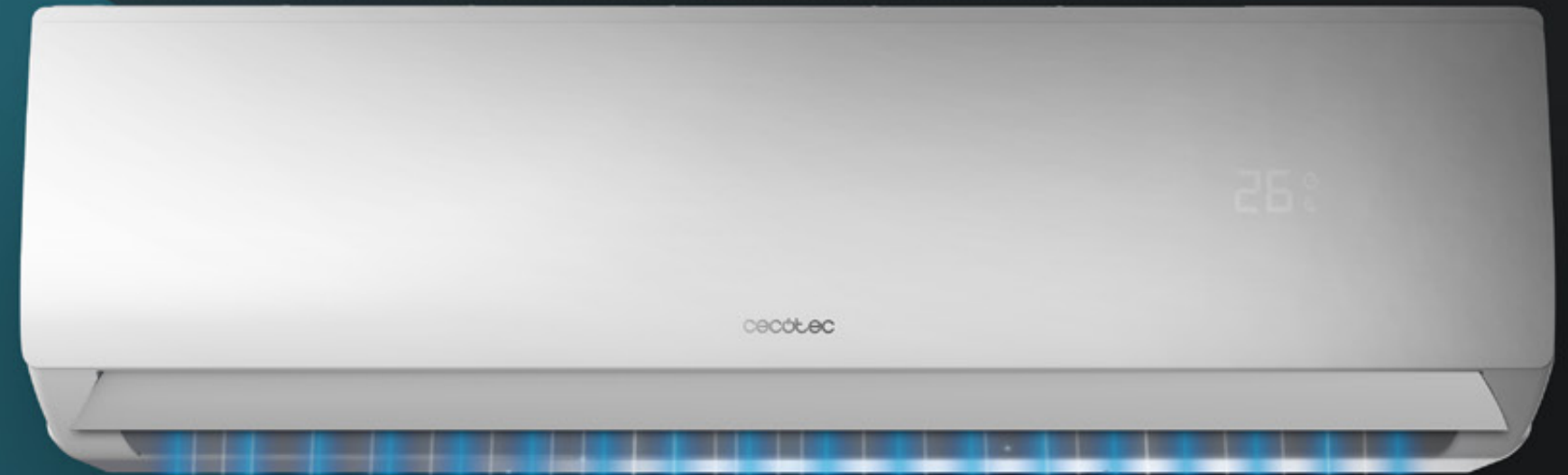
COVERAGE AREA UP TO 45 M²



HEAT PUMP



R32 REFRIGERANT GAS



AirClima 9000 Smartfresh Split air conditioner

9000-BTU split air conditioner with heat pump, remote control, and LED display.


FEATURES:


Split air conditioner with great cooling capacity, 9000 BTU, equivalent to 2250 frigories. Thanks to its cooling capacity, it is capable of reaching the desired temperature fast and effectively. The air conditioner's heat pump allows using it during winter to heat rooms. Inverter system, which maximises the air conditioning's compressor efficiency as it adjusts its operating to a steady speed and temperature, increasing its lifespan. The LED display shows all possible settings and indicates the ones being used at every moment, allowing for an easier control of the air conditioner. It has remote control on order for you to comfortably control the device from anywhere in your house. Its 5 operating modes (automatic, cooling, fan, heating and dehumidification) allow adapting it to every moment and season of the year. Its 8 air conditioning speeds offer maximum comfort, allowing you to select the desired speed according to the moment and your needs. You can also choose between its 3 operating options: Night (minimum noise), Eco (minimum consumption) and Auto-cleaning. With its Dehumidification mode, it is capable of absorbing up to 24 l/day, resulting in a much healthier atmosphere. Adapt and set the desired degrees in order to enjoy the perfect temperature throughout its 16-m2 coverage area. Its great air flow rate of 420 m³/h generates a great cold or hot air flow for you to enjoy the perfect temperature at home. The timer can be set up to 24 hours. Set the desired operating time and the device will automatically turn off. The air conditioning has a removable and washable air filter, which prevents the great majority of dust particles from being released back to the environment. The R32 gas increases effectiveness and the cooling/heating power. It is also environmentally friendly. The DC motor offers maximum air conditioning efficiency as it auto-regulates speed according to the settings selected. The air conditioning features a moving and oscillating flap that allows selecting the direction in which air is released. The energy classification for ventilation is A++, demonstrating its high efficiency during operation.


COMPOSITION:


Split air conditioner
Compressor
Remote control
Instruction manual



 76 x 33 x 76 cm 28.5 kg
76 x 33 x 76 cm 28.5 kg

 28.36 kg

 220-240 V 50 Hz
Cooling Capacity: 3400 (800~3900)
Heating capacity: 3420 (800~4000) W

 8435484081818 (Box)
18435484081815 (Master)
08181



AirClima 12000 Smartfresh Split air conditioner

12000-BTU split air conditioner with heat pump, remote control, and LED display.


FEATURES:


Split air conditioner with great cooling capacity, 12000 BTU, equivalent to 3000 frigories. Thanks to its cooling capacity, it is capable of reaching the desired temperature fast and effectively. The air conditioner's heat pump allows using it during winter to heat rooms. Inverter system, which maximises the air conditioning's compressor efficiency as it adjusts its operating to a steady speed and temperature, increasing its lifespan. The LED display shows all possible settings and indicates the ones being used at every moment, allowing for an easier control of the air conditioner. It has remote control on order for you to comfortably control the device from anywhere in your house. Its 5 operating modes (automatic, cooling, fan, heating and dehumidification) allow adapting it to every moment and season of the year. Its 8 air conditioning speeds offer maximum comfort, allowing you to select the desired speed according to the moment and your needs. You can also choose between its 3 operating options: Night (minimum noise), Eco (minimum consumption) and Auto-cleaning. With its Dehumidification mode, it is capable of absorbing up to 28,8 l/day, resulting in a much healthier atmosphere. Adapt and set the desired degrees in order to enjoy the perfect temperature throughout its 22-m2 coverage area. Its great air flow rate of 550 m³/h generates a great cold or hot air flow for you to enjoy the perfect temperature at home. The timer can be set up to 24 hours. Set the desired operating time and the device will automatically turn off. The air conditioning has a removable and washable air filter, which prevents the great majority of dust particles from being released back to the environment. The R32 gas increases effectiveness and the cooling/heating power. It is also environmentally friendly. The DC motor offers maximum air conditioning efficiency as it auto-regulates speed according to the settings selected. The air conditioning features a moving and oscillating flap that allows selecting the direction in which air is released. The energy classification for ventilation is A++, demonstrating its high efficiency during operation.


COMPOSITION:


Split air conditioner
Compressor
Remote control
Instruction manual



 26 x 31.5 x 84 cm 28.5 kg
26 x 31.5 x 84 cm 28.5 kg

 28.36 kg

 220-240 V 50 Hz
Cooling Capacity: 3400 (1000~3770)
Heating capacity: 3420 (1000~3810) W

 8435484081825 (Box)
18435484081822 (Master)
08182



EnergySilence 12000 AirClima split air conditioner

12000-BTU split air conditioner with heat pump, remote control, and LED display.

FEATURES:

Split air conditioner with great cooling capacity, 12000 BTU, equivalent to 3000 frigories. Thanks to its cooling capacity, it is capable of reaching the desired temperature fast and effectively. The air conditioner's heat pump allows using it during winter to heat rooms. Inverter system, which maximises the air conditioning's compressor efficiency as it adjusts its operating to a steady speed and temperature, increasing its lifespan. The LED display shows all possible settings and indicates the ones being used at every moment, allowing for an easier control of the air conditioner. It has remote control on order for you to comfortably control the device from anywhere in your house. Its 5 operating modes (automatic, cooling, fan, heating and dehumidification) allow adapting it to every moment and season of the year. Its 8 air conditioning speeds offer maximum comfort, allowing you to select the desired speed according to the moment and your needs. You can also choose between its 3 operating options: Night (minimum noise), Eco (minimum consumption) and Auto-cleaning. With its dehumidification mode it is capable of absorbing up to 29L/day, resulting in a much healthier atmosphere. Adapt and set the desired degrees in order to enjoy the perfect temperature throughout its 25-m² coverage area. Its great air flow rate of 650 m³/h generates a great cold or hot air flow for you to enjoy the perfect temperature at home. The timer can be set up to 24 hours. Set the desired operating time and the device will automatically turn off. The air conditioning has a removable and washable air filter, which prevents the great majority of dust particles from being released back to the environment. The R-32 gas increases effectiveness and the cooling/heating power. It is also environmentally friendly. The DC motor offers maximum air conditioning efficiency as it auto-regulates speed according to the settings selected. The air conditioning features a moving and oscillating flap that allows selecting the direction in which air is released. The lock function is a safety feature which avoids setting from being accidentally changed and protects it from being used by children. The automatic re-start function ensures the air conditioning will continue operating with the previously selected settings after a power cut.

COMPOSITION:

Air conditioner body
Compressor
Remote control
Instruction manual

-  28 x 38.5 x 91 cm 12 kg
91 x 38.5 x 28 cm 12 kg
-  82 x 20 x 31 cm 9 kg
-  220-240 ~ V 50 Hz
3400 3420 12000 fg W
-  8435484052900 (Box)
18435484052907 (Master)
05290



AirClima 12000 Smartfresh Connected Split air conditioner

12000 BTU split air conditioner with heat pump, remote & Wi-Fi control, and LED display.

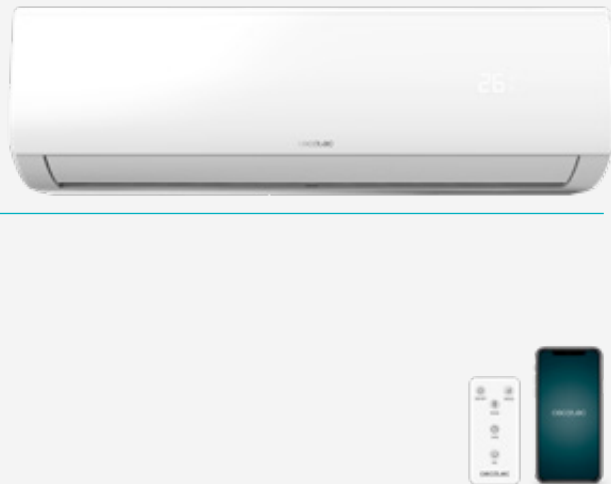
FEATURES:

GSplit air conditioner with great cooling capacity, 12000 BTU, equivalent to 3000 frigories. Thanks to its cooling capacity, it is capable of reaching the desired temperature fast and effectively. The air conditioner's heat pump allows using it during winter to heat rooms. Inverter system, which maximises the air conditioning's compressor efficiency as it adjusts its operating to a steady speed and temperature, increasing its lifespan. You can set the device as desired from your Smartphone through Wi-Fi connection, no matter where you are. The LED display shows all possible settings and indicates the ones being used at every moment, allowing for an easier control of the air conditioner. It has remote control on order for you to comfortably control the device from anywhere in your house. Its 5 operating modes (automatic, cooling, fan, heating and dehumidification) allow adapting it to every moment and season of the year. Its 8 air conditioning speeds offer maximum comfort, allowing you to select the desired speed according to the moment and your needs. You can also choose between its 3 operating options: Night (minimum noise), Eco (minimum consumption) and Auto-cleaning. With its Dehumidification mode, it is capable of absorbing up to 28,8 l/day, resulting in a much healthier atmosphere. Adapt and set the desired degrees in order to enjoy the perfect temperature throughout its 22-m² coverage area. Its great air flow rate of 550 m³/h generates a great cold or hot air flow for you to enjoy the perfect temperature at home. The timer can be set up to 24 hours. Set the desired operating time and the device will automatically turn off. The air conditioning has a removable and washable air filter, which prevents the great majority of dust particles from being released back to the environment. The R32 gas increases effectiveness and the cooling/heating power. It is also environmentally friendly. The DC motor offers maximum air conditioning efficiency as it auto-regulates speed according to the settings selected. The air conditioning features a moving and oscillating flap that allows selecting the direction in which air is released. The energy classification for ventilation is A++, demonstrating its high efficiency during operation.

COMPOSITION:

Split air conditioner
Compressor
Remote control
Instruction manual

-  26 x 31.5 x 84 cm 28.5 kg
26 x 31.5 x 84 cm 28.5 kg
- 
-  220-240 ~ V 50 Hz
3400 3420 12000 fg W
-  8435484081856 (Box)
18435484081853 (Master)
08185



AirClima 18000 Smartfresh Split air conditioner

18000-BTU split air conditioner with heat pump, remote control, and LED display.

FEATURES:

GSplit air conditioner with great cooling capacity, 18000 BTU, equivalent to 4500 frigories. Thanks to its cooling capacity, it is capable of reaching the desired temperature fast and effectively.

The air conditioner's heat pump allows using it during winter to heat rooms.

Inverter system, which maximises the air conditioning's compressor efficiency as it adjusts its operating to a steady speed and temperature, increasing its lifespan.

The LED display shows all possible settings and indicates the ones being used at every moment, allowing for an easier control of the air conditioner.

It has remote control on order for you to comfortably control the device from anywhere in your house.

Its 5 operating modes (automatic, cooling, fan, heating and dehumidification) allow adapting it to every moment and season of the year.

Its 8 air conditioning speeds offer maximum comfort, allowing you yo select the desired speed according to the moment and your needs.

You can also choose between its 3 operating options: Night (minimum noise), Eco (minimum consumption) and Auto-cleaning.

With its Dehumidification mode, it is capable of absorbing up to 36 l/day, resulting in a much healthier atmosphere.

Adapt and set the desired degrees in order to enjoy the perfect temperature throughout its 35-m2 coverage area.

Its great air flow rate of 800 m³/h generates a great cold or hot air flow for you to enjoy the perfect temperature at home.

The timer can be set up to 24 hours. Set the desired operating time and the device will automatically turn off.

The air conditioning has a removable and washable air filter, which prevents the great majority of dust particles from being released back to the environment.

The R32 gas increases effectiveness and the cooling/heating power. It is also environmentally friendly.

The DC motor offers maximum air conditioning efficiency as it auto-regulates speed according to the settings selected.

The air conditioning features a moving and oscillating flap that allows selecting the direction in which air is released.

COMPOSITION:

Split air conditioner
Compressor
Remote control
Instruction manual



98 x 38.5 x 92.5 cm 45.25 kg
98 x 38.5 x 92.5 cm 45.25 kg



28.36 kg



220-240 V 50 Hz
Cooling Capacity: 5100 (1250~5100)
Heating capacity: 5100 (1250~6070) W



8435484081832 (Box)
18435484081839 (Master)
08183



AirClima 24000 Smartfresh Split air conditioner

24000-BTU split air conditioner with heat pump, remote control, and LED display.

FEATURES:

Split air conditioner with great cooling capacity, 24000 BTU, equivalent to 6000 frigories. Thanks to its cooling capacity, it is capable of reaching the desired temperature fast and effectively.

The air conditioner's heat pump allows using it during winter to heat rooms.

Inverter system, which maximises the air conditioning's compressor efficiency as it adjusts its operating to a steady speed and temperature, increasing its lifespan.

The LED display shows all possible settings and indicates the ones being used at every moment, allowing for an easier control of the air conditioner.

It has remote control on order for you to comfortably control the device from anywhere in your house.

Its 5 operating modes (automatic, cooling, fan, heating and dehumidification) allow adapting it to every moment and season of the year.

Its 8 air conditioning speeds offer maximum comfort, allowing you yo select the desired speed according to the moment and your needs.

You can also choose between its 3 operating options: Night (minimum noise), Eco (minimum consumption) and Auto-cleaning.

With its Dehumidification mode, it is capable of absorbing up to 43,2 l/day, resulting in a much healthier atmosphere.

Adapt and set the desired degrees in order to enjoy the perfect temperature throughout its 45-m2 coverage area.

Its great air flow rate of 980 m³/h generates a great cold or hot air flow for you to enjoy the perfect temperature at home.

The timer can be set up to 24 hours. Set the desired operating time and the device will automatically turn off.

The air conditioning has a removable and washable air filter, which prevents the great majority of dust particles from being released back to the environment.

The R32 gas increases effectiveness and the cooling/heating power. It is also environmentally friendly.

The DC motor offers maximum air conditioning efficiency as it auto-regulates speed according to the settings selected.

The air conditioning features a moving and oscillating flap that allows selecting the direction in which air is released.

The energy classification for ventilation is A++, demonstrating its high efficiency during operation.

COMPOSITION:

Aire acondicionado split, Compresor, Mando a distancia, Manual de instruccionesSplit air conditioner
Compressor
Remote control
Instruction manual



108.5 x 39.5 x 105.7 cm 53.3 kg
108.5 x 39.5 x 105.7 cm 53.3 kg



28.36 kg



220-240 V 50 Hz
Cooling Capacity: 6810 (1830~7800)
Heating capacity: 6870 (1850~7900) W



8435484081849 (Box)
18435484081846 (Master)
08184





AIRE
ACONDICIONADO
SPLIT
AIRCLIMA 9000
SMARTFRESH

AIRE
ACONDICIONADO
SPLIT AIRCLIMA
12000
SMARTFRESH



AIRE
ACONDICIONADO
SPLIT
ENERGYSILENCE
12000 AIRCLIMA

AIRE
ACONDICIONADO
SPLIT AIRCLIMA
12000
SMARTFRESH
CONNECTED

AIRE
ACONDICIONADO
SPLIT AIRCLIMA
18000
SMARTFRESH

AIRE
ACONDICIONADO
SPLIT AIRCLIMA
24000
SMARTFRESH

Reference	8181	8182	5290	8185	8183	8184
Frigories/h	2250	3000	3000	3000	4500	6000
BTU	9000	12000	12000	12000	18000	24000
Coverage area (m²)	16	22	22	22	35	45
Heat pump	✓	✓	✓	✓	✓	✓
Inverter system	✓	✓	✓	✓	✓	✓
No. of speeds	8	8	8	8	8	8
Modes	5	5	5	5	5	5
Timer (h)	24	24	24	24	24	24
Air flow (m³/h)	420	550	550	550	800	980
Refrigerant gas	R32	R32	R32	R32	R32	R32
Dehumidification (L/day)	24	28.8	28.8	28.8	36	43.2
Remote control	✓	✓	✓	✓	✓	✓
LED display	✓	✓	✓	✓	✓	✓
Wi-Fi	✗	✗	✗	✓	✗	✗

Multisplit



UP TO 3000 FRIGORIES

BTU

BTU UP TO 12000



COVERAGE AREA 22 M²



HEAT PUMP



R32 REFRIGERANT GAS



AirClima 18000 Multi Connected

Multi split air conditioner consisting of two indoor units, one of 9000 BTU and one of 12000 BTU, plus an outdoor unit of 18000 BTU.

FEATURES:

Split air conditioner with great cooling capacity, 9000 BTU, equivalent to 2250 frigories. Thanks to its cooling capacity, it is capable of reaching the desired temperature fast and effectively. Split air conditioner with great cooling capacity, 12000 BTU, equivalent to 3000 frigories. Thanks to its cooling capacity, it is capable of reaching the desired temperature fast and effectively. Outdoor unit for multi split air conditioner with a large cooling capacity of 18000 BTU equivalent to 4500 frigories. Thanks to its cooling capacity, it is capable of reaching the desired temperature fast and effectively. The air conditioning heat pump can also be used in winter in order to increase the temperature of the room in which it is located. Inverter system, which maximises the air conditioning's compressor efficiency as it adjusts its operation to a steady speed and temperature, increasing its lifespan. The DC motor offers maximum air conditioning efficiency as it auto-regulates speed according to the settings selected. The device can be configured remotely via a Wi-Fi connection, so you have full control of the device on your smartphone from anywhere. The LED display shows all possible settings and highlights which settings are currently in use to provide easy control of the air conditioner. It has a remote control to comfortably control the device from anywhere in your house. Its 5 operating modes (automatic, cooling, fan, heating and dehumidification) allow adapting it to every moment and season of the year. You can also choose between its 3 operating options: Sleep (minimum noise), Eco (minimum consumption) and Auto-cleaning. Its 8 air conditioning speeds offer maximum comfort, allowing you to select the desired speed according to the moment and your needs. The timer can be set up to 24 hours. Set the desired operating time and the device will automatically turn off. For the 9000 BTU unit, it has a coverage area of 16 m² and a large airflow rate of 420 m³/h. In the case of the 12000 BTU unit, its coverage area is 22 m² which allows the temperature of the room to be adapted and modified to the desired degrees, either to reduce the degrees in summer or to increase them in winter. Its great air flow rate of 550 m³/h generates a great cold or hot air flow for you to enjoy the perfect temperature at home. The compressor has an IPX4 certification which shows its high protection even against water jets of 10 litres per minute at high pressure. The R32 gas increases effectiveness and the cooling/heating power. It is also environmentally friendly.

COMPOSITION:

8109 AirClima 9000 Multi Indoor Connected, 8134 AirClima 12000 Multi Indoor Connected, 8147 AirClima 18000 Multi Outdoor



P80346



AirClima 27000 Multi Connected

Multi split air conditioner consisting of three indoor units, two 9000 BTU and one 12000 BTU, plus an outdoor unit of 27000 BTU.

FEATURES:

Two split air conditioners with a large cooling capacity of 9000 BTU equivalent to 2250 frigories. Thanks to their cooling capacity, they are capable of reaching the desired temperature fast and effectively. Split air conditioner with great cooling capacity, 12000 BTU, equivalent to 3000 frigories. Thanks to its cooling capacity, it is capable of reaching the desired temperature fast and effectively. Outdoor unit for multi split air conditioner with a large cooling capacity of 27000 BTU equivalent to 6750 frigories. Thanks to its cooling capacity, it is capable of reaching the desired temperature fast and effectively. The air conditioning heat pump can also be used in winter in order to increase the temperature of the room in which it is located. Inverter system, which maximises the air conditioning's compressor efficiency as it adjusts its operation to a steady speed and temperature, increasing its lifespan. The DC motor offers maximum air conditioning efficiency as it auto-regulates speed according to the settings selected. The device can be configured remotely via a Wi-Fi connection, so you have full control of the device on your smartphone from anywhere. The LED display shows all possible settings and highlights which settings are currently in use to provide easy control of the air conditioner. It has a remote control to comfortably control the device from anywhere in your house. Its 5 operating modes (automatic, cooling, fan, heating and dehumidification) allow adapting it to every moment and season of the year. You can also choose between its 3 operating options: Sleep (minimum noise), Eco (minimum consumption) and Auto-cleaning. Its 8 air conditioning speeds offer maximum comfort, allowing you to select the desired speed according to the moment and your needs. The timer can be set up to 24 hours. Set the desired operating time and the device will automatically turn off. For the 9000 BTU unit, it has a coverage area of 16 m² and a large airflow rate of 420 m³/h. In the case of the 12000 BTU unit, its coverage area is 22 m² which allows the temperature of the room to be adapted and modified to the desired degrees, either to reduce the degrees in summer or to increase them in winter. Its great air flow rate of 550 m³/h generates a great cold or hot air flow for you to enjoy the perfect temperature at home. The compressor has an IPX4 certification which shows its high protection even against water jets of 10 litres per minute at high pressure.

COMPOSITION:

8109 AirClima 9000 Multi Indoor Connected, 8109 AirClima 9000 Multi Indoor Connected, 8134 AirClima 12000 Multi Indoor Connected, 8134 AirClima 12000 Multi Indoor Connected, 8148 AirClima 27000 Multi Outdoor



P80347





AIRCLIMA 18000 MULTI CONNECTED



AIRCLIMA 27000 MULTI CONNECTED

Pack reference	P80346			P80347			
Name of pack references	AirClima 9000 Multi Indoor Connected	AirClima 12000 Multi Indoor Connected	AirClima 18000 Multi Outdoor	AirClima 9000 Multi Indoor Connected	AirClima 9000 Multi Indoor Connected	AirClima 12000 Multi Indoor Connected	AirClima 27000 Multi Outdoor
References included in pack	8109	8134	8147	8109	8109	8134	8148
Frigories/h	2250	3000	4500	2250	2250	3000	6750
BTU	9000	12000	18000	9000	9000	12000	27000
Coverage area (m²)	16	22	-	16	16	22	-
Heat pump	✓	✓	-	✓	✓	✓	-
Inverter system	✓	✓	-	✓	✓	✓	-
No. of speeds	8	8	-	8	8	8	-
Modes	5	5	-	5	5	5	-
Timer (h)	24	24	-	24	24	24	-
Air flow (m³/h)	420	550	-	420	420	550	-
Refrigerant gas	R32	R32	R32	R32	R32	R32	R32
Dehumidification (L/day)	24	28.8	-	24	24	28.8	-
Remote control	✓	✓	-	✓	✓	✓	-
LED display	✓	✓	-	✓	✓	✓	-
Wi-Fi	✓	✓	-	✓	✓	✓	-

Cassettes



UP TO 6000 FRIGORIES

BTU

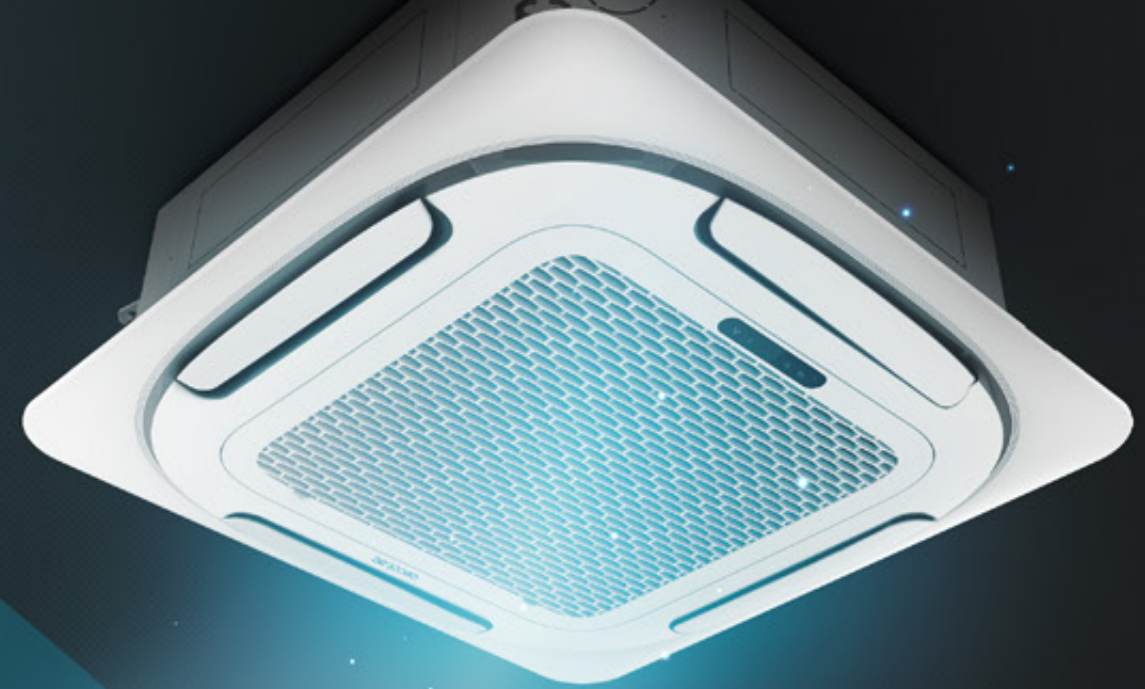
BTU UP TO 24000



HEAT PUMP



R32 REFRIGERANT GAS



AirClima 12000 Cassette Connected

12000-BTU ceiling mounted cassette air conditioner with heat pump, remote control, LED display, and Wi-Fi control. Inverter system. 5 modes and 8 speeds. Daily dehumidification of 28.8 l/day and coverage area of 22 m². Air flow rate 550 m³/h, 24 h timer, air filter, R32 gas, DC motor. Energy classification A + +/A + + and power of 3400 W for cooling and 3420 W for heating.

FEATURES:

Split air conditioner with great cooling capacity, 12000 BTU, equivalent to 3000 frigories. Thanks to its cooling capacity, it is capable of reaching the desired temperature fast and effectively.

The air conditioning heat pump can also be used in winter in order to increase the temperature of the room in which it is located.

Inverter system, which maximises the air conditioning's compressor efficiency as it adjusts its operation to a steady speed and temperature, increasing its lifespan. The DC motor offers maximum air conditioning efficiency as it auto-regulates speed according to the selected settings.

The device can be configured remotely via a Wi-Fi connection, so you have full control of the device on your smartphone from anywhere. The LED display shows all possible settings and highlights which settings are currently in use to provide easy control of the air conditioner. It has a remote control to comfortably control the device from anywhere in your house.

Its 5 operating modes (automatic, cooling, fan, heating and dehumidification) allow adapting it to every moment and season of the year. You can also choose between its 3 operating options: Sleep (minimum noise), Eco (minimum consumption) and Auto-cleaning. Its 8 air conditioning speeds offer maximum comfort, allowing you to select the desired speed according to the moment and your needs.

The timer can be set up to 24 hours. Set the desired operating time and the device will automatically turn off.

Adapt and set the desired degrees in order to enjoy the perfect temperature throughout its 22-m² coverage area. Its great air flow rate of 550 m³/h generates a great cold or hot air flow for you to enjoy the perfect temperature at home.

With its Dehumidification mode, it is capable of absorbing up to 28,8 l/day, resulting in a much healthier atmosphere.

The R32 gas increases effectiveness and the cooling/heating power. It is also environmentally friendly.

The energy classification for ventilation is A++, demonstrating its high efficiency during operation. The A+ heating energy class proves its high operating efficiency.

COMPOSITION:

Ref. 8149 AirClima 12000 Cassette Indoor Connected, Ref. 9282 AirClima 12000 Cassette Panel, Ref. 8150 AirClima 12000 Cassette Outdoor



P80348

AirClima 18000 Cassette Connected

18000-BTU ceiling mounted cassette air conditioner with heat pump, remote control, LED display, and Wi-Fi control. Inverter system. 5 modes and 8 speeds. Daily dehumidification of 36 l/day and coverage area of 35 m². Air flow rate 800 m³/h, 24 h timer, air filter, R32 gas, DC motor. Energy classification A + +/A + + and power of 5100 W for cooling and 5100 W for heating.

FEATURES:

Split air conditioner with great cooling capacity, 18000 BTU, equivalent to 4500 frigories. Thanks to its cooling capacity, it is capable of reaching the desired temperature fast and effectively.

The air conditioning heat pump can also be used in winter in order to increase the temperature of the room in which it is located.

Inverter system, which maximises the air conditioning's compressor efficiency as it adjusts its operation to a steady speed and temperature, increasing its lifespan. The DC motor offers maximum air conditioning efficiency as it auto-regulates speed according to the selected settings.

The device can be configured remotely via a Wi-Fi connection, so you have full control of the device on your smartphone from anywhere. The LED display shows all possible settings and highlights which settings are currently in use to provide easy control of the air conditioner. It has a remote control to comfortably control the device from anywhere in your house.

Its 5 operating modes (automatic, cooling, fan, heating and dehumidification) allow adapting it to every moment and season of the year. You can also choose between its 3 operating options: Sleep (minimum noise), Eco (minimum consumption) and Auto-cleaning. Its 8 air conditioning speeds offer maximum comfort, allowing you to select the desired speed according to the moment and your needs.

The timer can be set up to 24 hours. Set the desired operating time and the device will automatically turn off.

Adapt and set the desired degrees in order to enjoy the perfect temperature throughout its 35-m² coverage area. Its great air flow rate of 800 m³/h generates a great cold or hot air flow for you to enjoy the perfect temperature at home.

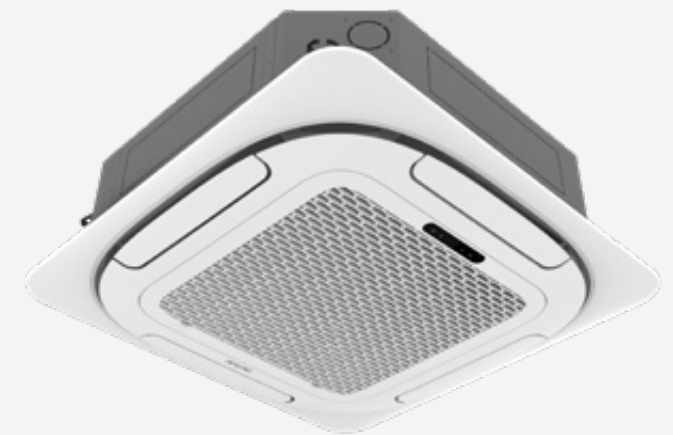
With its Dehumidification mode, it is capable of absorbing up to 36 l/day, resulting in a much healthier atmosphere.

The R32 gas increases effectiveness and the cooling/heating power. It is also environmentally friendly.

The energy classification for ventilation is A++, demonstrating its high efficiency during operation. The A+ heating energy class proves its high operating efficiency.

COMPOSITION:

Ref. 8151 AirClima 18000 Cassette Indoor Connected, Ref. 9283 AirClima 18000 Cassette Panel, Ref. 8152 AirClima 18000 Cassette Outdoor



P80349

AirClima 24000 Cassette Connected

24000-BTU ceiling mounted cassette air conditioner with heat pump, remote control, LED display, and Wi-Fi control. Inverter system. 5 modes and 8 speeds. Daily dehumidification of 43.2 l/day and overage area of 45 m². Air flow rate 980 m³/h, 24 h timer, air filter, R32 gas, DC motor. Energy classification A + +/A + + and power of 6810 W for cooling and 6870 W for heating.

FEATURES:

Split air conditioner with great cooling capacity, 24000 BTU, equivalent to 6000 frigories. Thanks to its cooling capacity, it is capable of reaching the desired temperature fast and effectively.

The air conditioning heat pump can also be used in winter in order to increase the temperature of the room in which it is located.

Inverter system, which maximises the air conditioning's compressor efficiency as it adjusts its operation to a steady speed and temperature, increasing its lifespan. The DC motor offers maximum air conditioning efficiency as it auto-regulates speed according to the selected settings.

The device can be configured remotely via a Wi-Fi connection, so you have full control of the device on your smartphone from anywhere. The LED display shows all possible settings and highlights which settings are currently in use to provide easy control of the air conditioner. It has a remote control to comfortably control the device from anywhere in your house.

Its 5 operating modes (automatic, cooling, fan, heating and dehumidification) allow adapting it to every moment and season of the year. You can also choose between its 3 operating options: Sleep (minimum noise), Eco (minimum consumption) and Auto-cleaning. Its 8 air conditioning speeds offer maximum comfort, allowing you to select the desired speed according to the moment and your needs.

The timer can be set up to 24 hours. Set the desired operating time and the device will automatically turn off.

Adapt and set the desired degrees in order to enjoy the perfect temperature throughout its 45-m2 coverage area. Its great air flow rate of 980 m3/h generates a great cold or hot air flow for you to enjoy the perfect temperature at home.

With its Dehumidification mode, it is capable of absorbing up to 43,2 l/day, resulting in a much healthier atmosphere. The R32 gas increases effectiveness and the cooling/heating power. It is also environmentally friendly.

The energy classification for ventilation is A++, demonstrating its high efficiency during operation. The A+ heating energy class proves its high operating efficiency.

COMPOSITION:

Ref. 8153 AirClima 24000 Cassette Indoor Connected, Ref. 9284 AirClima 24000 Cassette Panel, Ref. 8154 AirClima 24000 Cassette Outdoor



 P80350



AIRCLIMA
12000
CASSETTE
CONNECTED

AIRCLIMA
18000
CASSETTE
CONNECTED

AIRCLIMA
24000
CASSETTE
CONNECTED

Pack reference	P80348	P80349	P80350
References included in pack	8149 / 8150 / 9282	8151 / 8152 / 9283	8153 / 8154 / 9284
Frigories/h	3000	4500	6000
BTU	12000	18000	24000
Coverage area (m2)	22	35	45
Heat pump	✓	✓	✓
Inverter system	✓	✓	✓
No. of speeds	8	8	8
Modes	5	5	5
Timer (h)	24	24	24
Air flow (m3/h)	600	800	1500
Refrigerant gas	R32	R32	R32
Dehumidification (l/day)	24	28.8	48
Remote control	✓	✓	✓
LED display	✓	✓	✓
Wi-Fi	✓	✓	✓

The products shown on this document are subject to constant improvement. Their technical features and appearance may be subject to change without previous notice. CECOTEC accepts no responsibility for any faults, errors or modifications made in this printout that are beyond our control, and in no case can they be considered as an additional guarantee. PE01240711

cecotec